



■ ABOUT US



Welcome to our premier training center, strategically located in the heart of Nilai, Negeri Sembilan. Our state-of-the-art facility is designed to meet the diverse training needs of individuals and organizations, providing a conducive and comfortable environment for personal and professional development.

With the capacity to accommodate up to 24 participants, our training center offers a range of amenities that make learning and collaboration a seamless experience. From top-notch PC facilities to a well-equipped pantry and refreshment services, we are committed to ensuring that your training sessions are productive, engaging, and enjoyable. Join us in our modern and well-appointed training center, where learning meets comfort, and innovation meets convenience.

OBJECTIVES



SKILL DEVELOPMENT



RESEARCH AND INNOVATION



CERTIFICATION PROGRAMS



WORKFORCE DEVELOPMENT



COMMUNITY ENGAGEMENT



NETWORKING OPPORTUNITIES



CAPACITY BUILDING



PROFESSIONAL DEVELOPMENT



**SUPPORTING GOVERNMENT
INITIATIVES**



ADDRESSING INDUSTRY DEMAND

EXECUTIVE SUMMARY



We propose the establishment of a specialized training center, named Analytic Academy. This center will focus on providing comprehensive training programs for various software and services related to geospatial technology, including but not limited to ArcGIS, QGIS, SuperMap, and other GIS platforms. Additionally, the training programs will encompass Microsoft Office suite, including Excel, Word, PowerPoint, and other relevant tools. The training will cover a wide range of topics beyond GIS software, extending to IT consulting and the development of systems or applications integrating geospatial technology and office productivity tools.

OUR VALUES

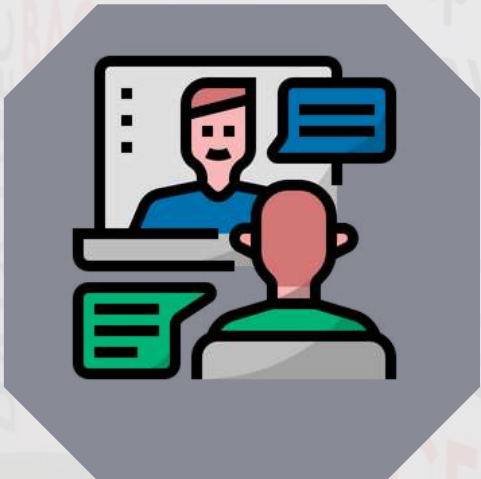
- 1.Trust:** reliability, credibility, integrity, consistency , and transparency
- 2.Excellence:** Doing your best and striving for the highest quality in everything you do.
- 3.Collaboration:** Working together with others to achieve common goals, sharing ideas, and supporting each other.
- 4.Gratitude:** Being thankful and appreciative of what you have, as well as acknowledging and expressing appreciation for the kindness and help of others
- 5.Innovation:** Coming up with new and creative ideas, solutions, or approaches to improve things and solve problems.
- 6.Accountability:** Taking responsibility for your actions, decisions, and their consequences, and being answerable for your commitments and duties
- 7.Food:** Provide local authentic Malaysian food.
- 8.Drinks:** Lemonade welcome drink provided.
- 9.Professionalism:** Certified trainers

SPACE RENTAL SERVICES



CONDUCTING EVENTS OR ACTIVITIES:

- HOSTING WORKSHOPS, SEMINARS, CONFERENCES, OR TRAINING SESSIONS.
- ORGANIZING COMMUNITY EVENTS, EXHIBITIONS, OR CULTURAL ACTIVITIES.



MEETING AND COLLABORATION:

- PROVIDING A VENUE FOR TEAM MEETINGS, CLIENT PRESENTATIONS, OR COLLABORATION SESSIONS.
- RENTING SPACE FOR OFF-SITE RETREATS OR STRATEGY SESSIONS.
- TRAINING AND WORKSHOPS:



CONDUCTING EMPLOYEE TRAINING PROGRAMS OR WORKSHOPS.

- RENTING SPACE FOR SKILL DEVELOPMENT SESSIONS OR
- CERTIFICATION COURSES.

FACILITIES



PARKING SPACE



TOILET



PRAYER ROOM



FREE FLOW OF COFFEE AND BEVERAGES



LOUNGE AREAS



THREE TIMES MEAL



REFRESHMENTS



AUDIOVISUAL EQUIPMENT

WHAT WE DO



**Customized
Training
Programs**



**Training Proposed
in tender bidding**



**HRDC Claimable
Training**



**Training
workshops and
courses**



**Seminar and
conference
facilities**



**Training
collaborations**

OUR PEOPLE IS OUR BRAND



HI, CALL ME SHEHA
I'AM THE MANAGER



HI, I'AM DIN
DATA ANALYTIC EXPERT



HI,I'AM SYAABAN
DATABASE
MANAGEMENT EXPERT



HI, I'AM AMIN
ARCGIS SERVER EXPERT



HI, I'AM ASIAH
ANALYTICS EXPERT



HI, I'AM FATIN
REMOTE SENSING
EXPERT



HI, I 'AM AIN
DATA MANAGEMENT
EXPERT

OUR PEOPLE IS OUR BRAND

**HI, I'AM IZATIE
GEOPLANNER EXPERT**



**HI, I'AM SHAILI
3D EXPERT**



**HI, I'AM AIMI
ARCGIS APPLICATION
EXPERT**



**HI, I'AM Wafa
COORDINATE SYSTEMS
EXPERT**



**HI, I'AM NAD
GIS, ANALYTICAL
(ENVIRONMENT &
ECONOMY), MCDM
EXPERT**



**HI, I'AM ANIS
SYSTEM DESIGN AND
DOCUMENTATION &
SYSTEM MODELING
EXPERT**



■ TRAINING PROGRAMS

1. Introduction to GIS:

- Basic concepts and principles of GIS
- Understanding spatial data and mapping

2. GIS Software Training:

- Specific software platforms (e.g., ArcGIS, QGIS)
- Hands-on exercises for data manipulation and analysis

3. Spatial Analysis:

- Advanced techniques for spatial data analysis
- Geoprocessing and modeling

4. Remote Sensing:

- Image interpretation and analysis
- Use of satellite and aerial imagery

5. Web GIS:

- Creating and publishing web maps
- Developing interactive web applications

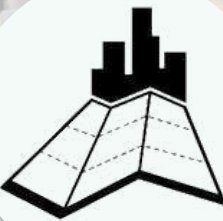


TRAINING PROGRAMS



6. GIS Programming:

- Python scripting for GIS automation
- Application programming interfaces (APIs) for GIS



7. GIS for Urban Planning:

- Applications of GIS in city planning and management
- Spatial decision support systems



8. Environmental GIS:

- Using GIS for environmental monitoring and analysis
- Conservation and natural resource management



9. Geodatabases and Data Management:

- Designing and managing spatial databases
- Data quality and integrity



10. Cartography and Map Design:

- Principles of map design
- Creating visually effective maps

■ TRAINING PROGRAMS

IT Training:

1.Introduction to IT:

- Overview of information technology concepts
- Understanding hardware and software components

2.Programming and Development:

- Learning programming languages (e.g., Python, Java)
- Web development (HTML, CSS, JavaScript)

3. Database Management:

- SQL for database querying
- Database design and administration

4.Networking:

- Basics of computer networks
- Network security and protocols

5.Cybersecurity:

- Threats and vulnerabilities
- Security measures and practices



■ TRAINING PROGRAMS



6.Cloud Computing:

- Introduction to cloud platforms (e.g., AWS, Azure)
- Cloud deployment and management



7.IT Project Management:

- Project planning and execution
- Agile methodologies



8.Data Science and Analytics:

- Data visualization
- Data-driven decision-making



9.IT Support and Troubleshooting:

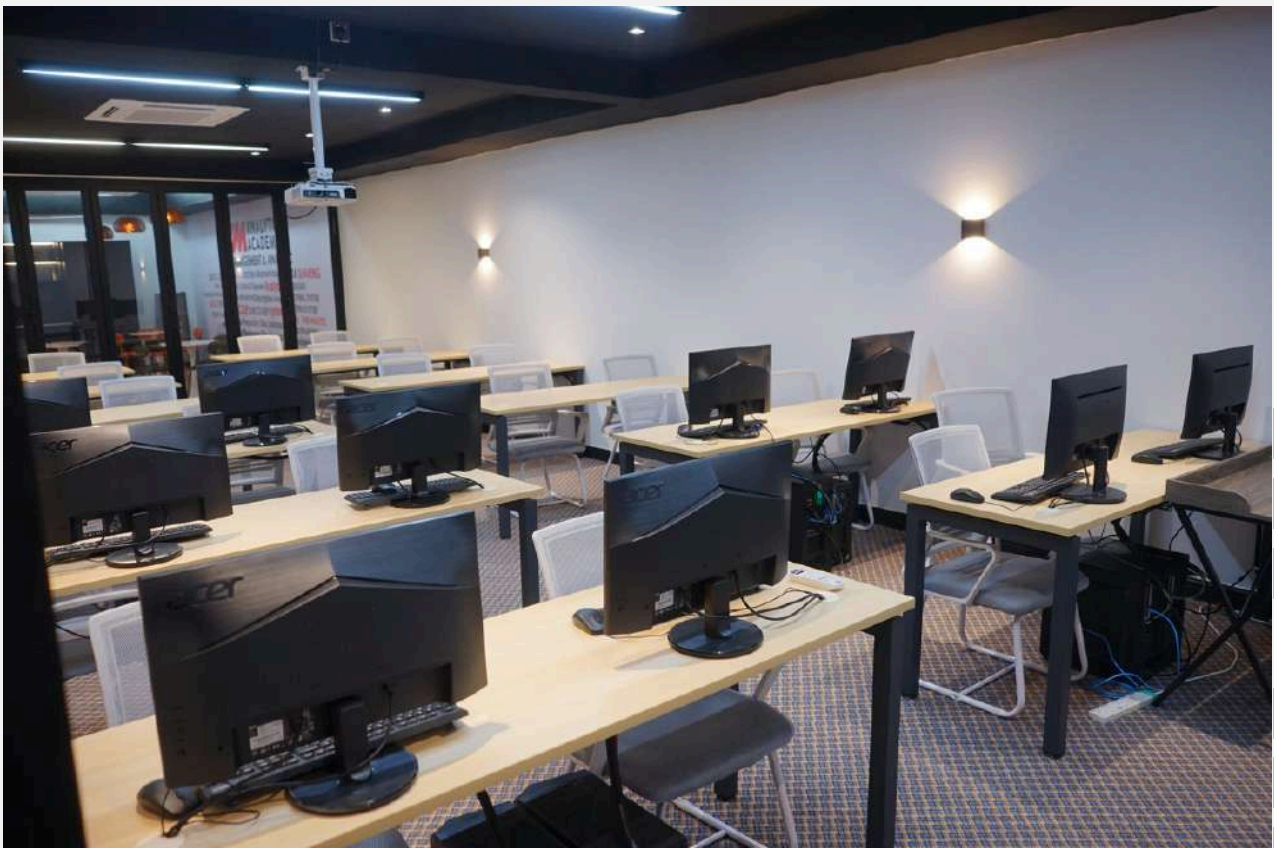
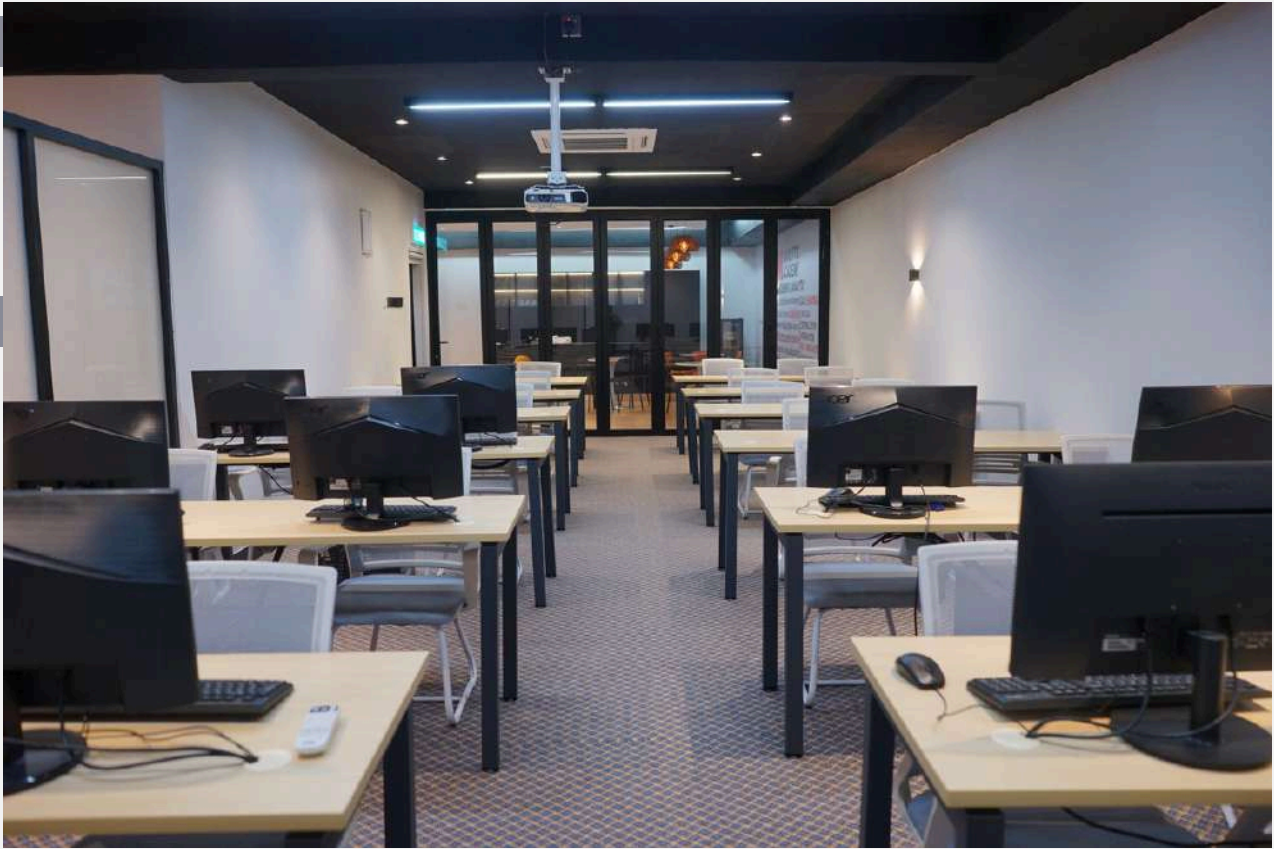
- Help desk and technical support
- Diagnosing and resolving IT issues



10.Business Analysis and Systems Integration:

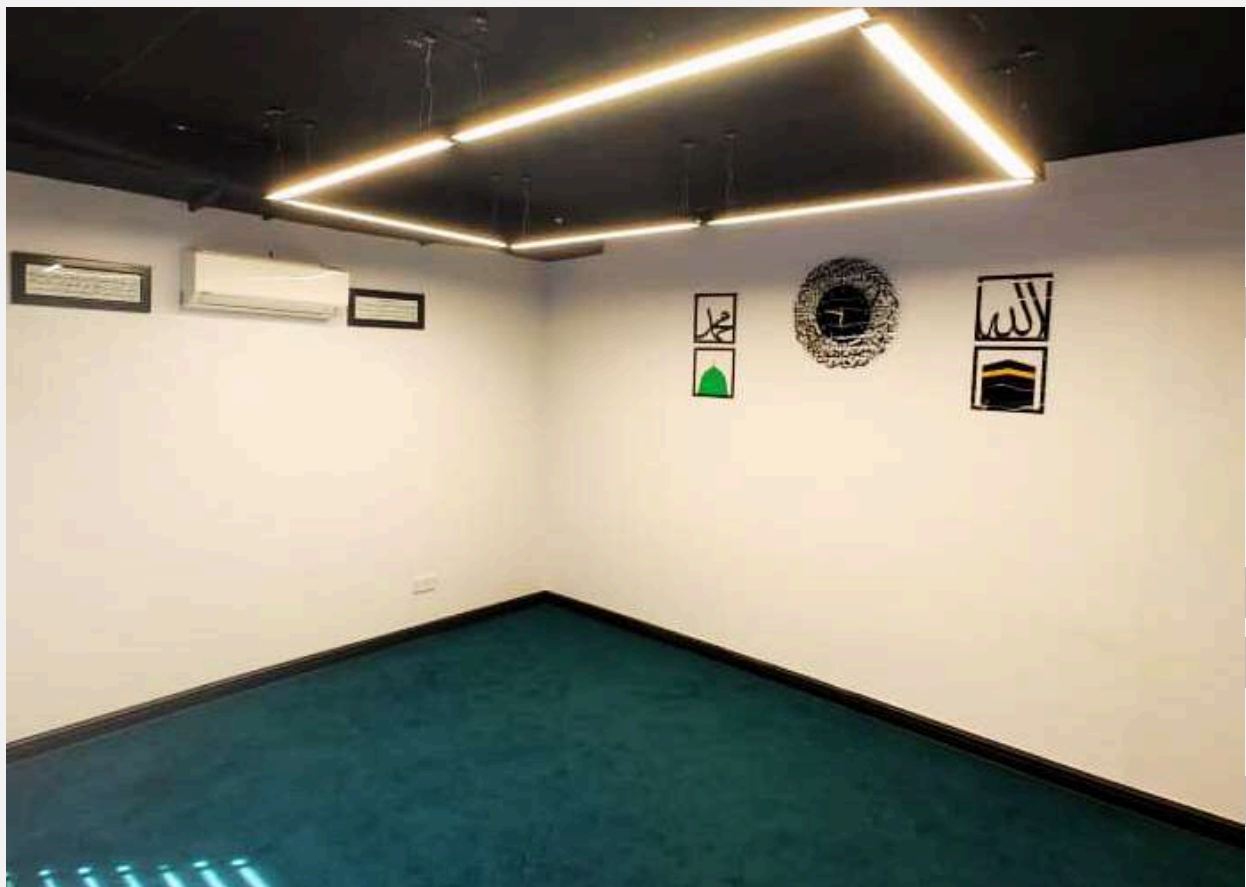
- Analyzing business processes
- Integrating IT systems for organizational efficiency

GALLERY

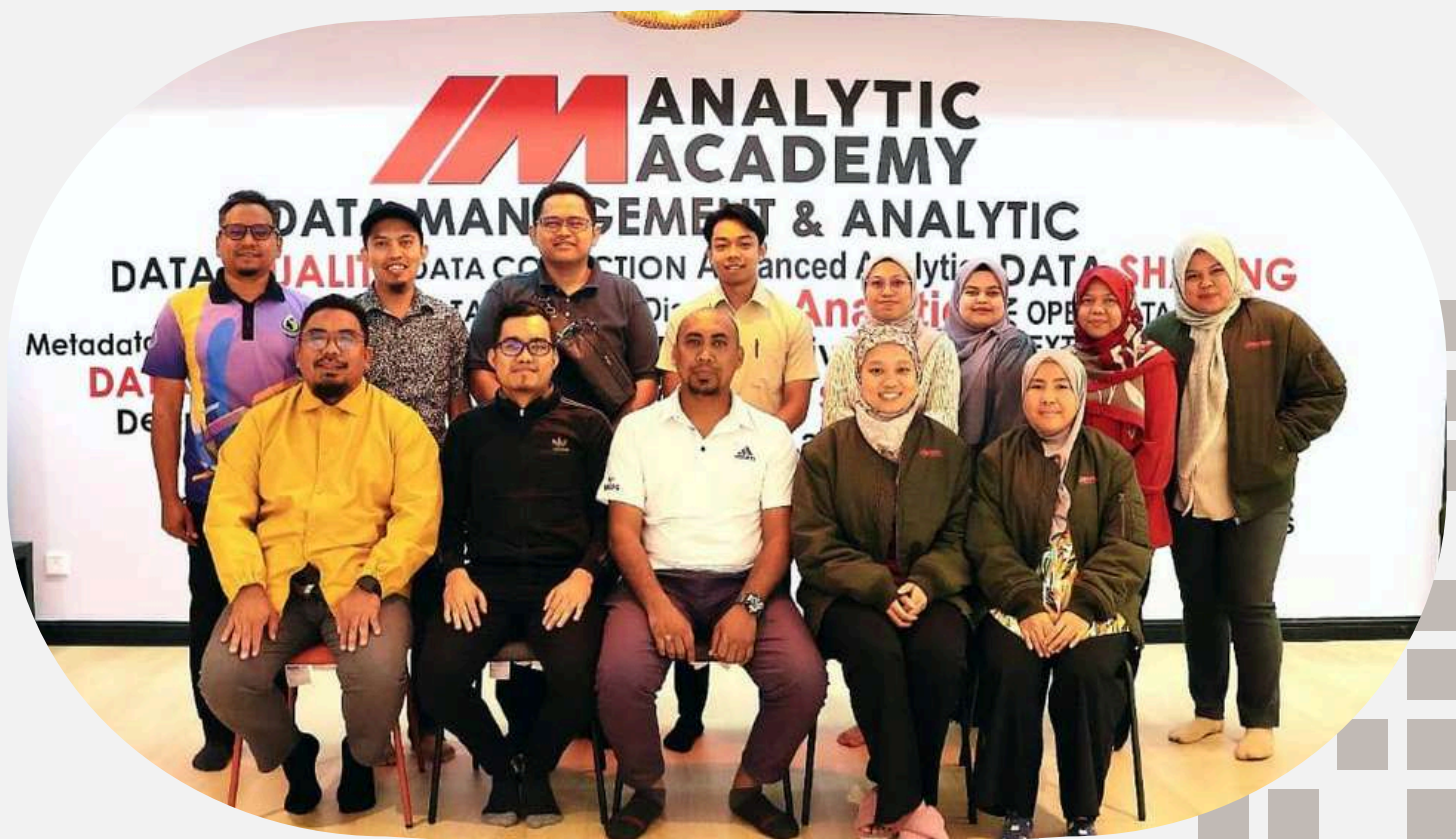




GALLERY



GALLERY



GALLERY



GALLERY



GALLERY





GET IN TOUCH

TRAINING MANAGER: SHEHA OMAR
EMAIL : TRAINING@MACADEMY.COM.MY
CONTACT:018 -227 2131



HRD CORP
HUMAN RESOURCE DEVELOPMENT CORPORATION